

McGuireWoods LLP
1750 Tysons Boulevard
Suite 1800
Tysons Corner, VA 22102-4215
Phone: 703.712.5000
Fax: 703.712.5050
www.mcguirewoods.com

Lisa M. Chiblow
Direct: 703.712.5364

McGUIREWOODS

Land Use and Development
lchiblow@mcguirewoods.com

December 16, 2013

Capitol Prop. Mgmt.
c/o Armfield Farm HOA
3914 Centreville Road, Suite 300
Chantilly, VA 20151

Re: The Arbors of Chantilly, Assisted Living Facility Proposal for 13622 Lee Jackson
Memorial Highway
Tax Map #34-4-((1))-060

Dear Neighbor:

I would like to take this opportunity to let you know that we are in the process of preparing a Special Exception application to develop the property at 13622 Lee Jackson Highway as a 48 unit assisted living facility. The facility will be entirely dedicated to Alzheimer's care and those with memory impairment. For your reference an aerial exhibit with the proposed layout has been attached. The layout has been designed to fit into the fabric of the existing community. The building is one story in height in order to be compatible with the neighboring residential uses. The eastern portion of the site will be preserved.

The Arbor Company has over two decades of experience providing Alzheimer's care. They strive to provide the highest quality of care and customer service to its residents. The Arbor staff are trained to provide care in the most compassionate and advanced manner. This facility will be an opportunity to provide this much needed service to residents of Fairfax County in need of such support.

We are in the early stages of public outreach and are interested in feedback from the community. If you would like more information or would like to set up a meeting to discuss please contact me via email at lchiblow@mcguirewoods.com or via telephone at (703) 712-5364. I look forward to hearing from you.

Regards,

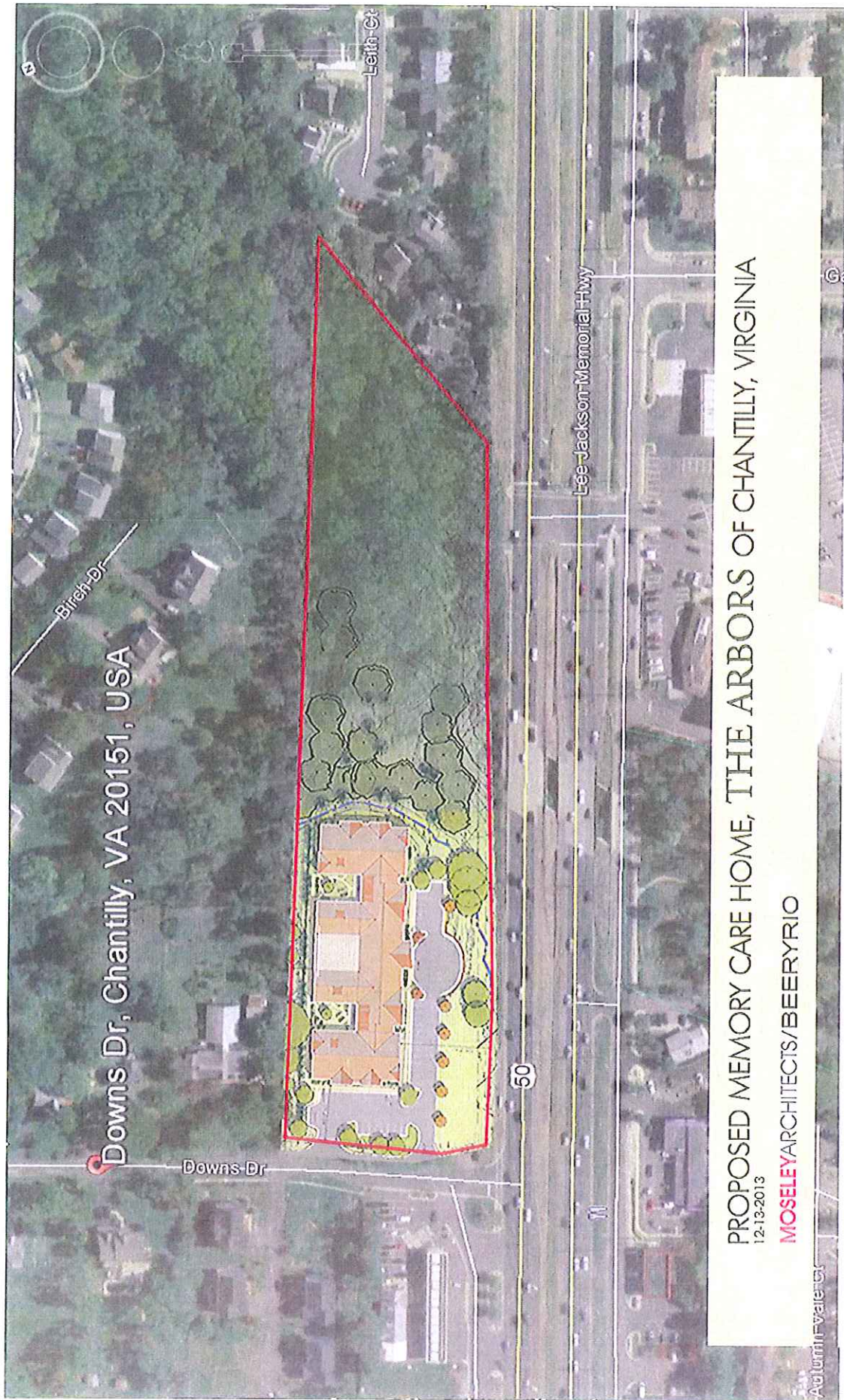


Lisa M. Chiblow
Land Use Planner

Encl.

cc: Supervisor Mike Frey
Planning Commissioner John Litzenberger
Sean Ambrose, Artisan

S2658138_I.DO



PROPOSED MEMORY CARE HOME, THE ARBORS OF CHANTILLY, VIRGINIA
12-18-2013

MOSELEYARCHITECTS/BEERYRIO